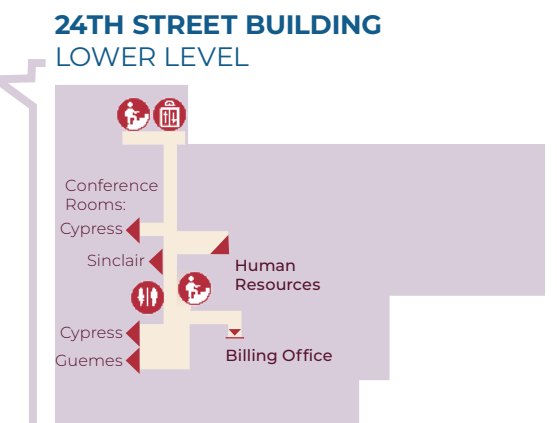
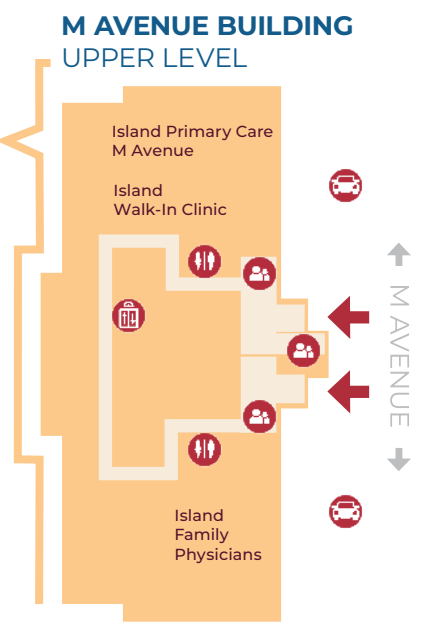
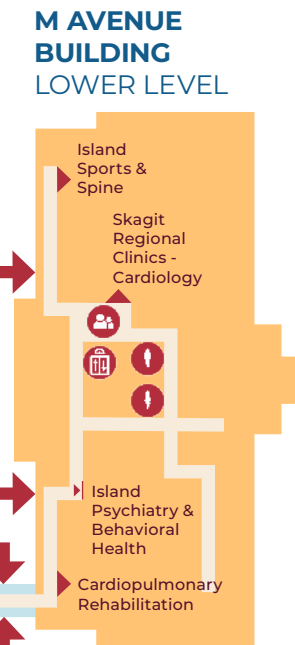
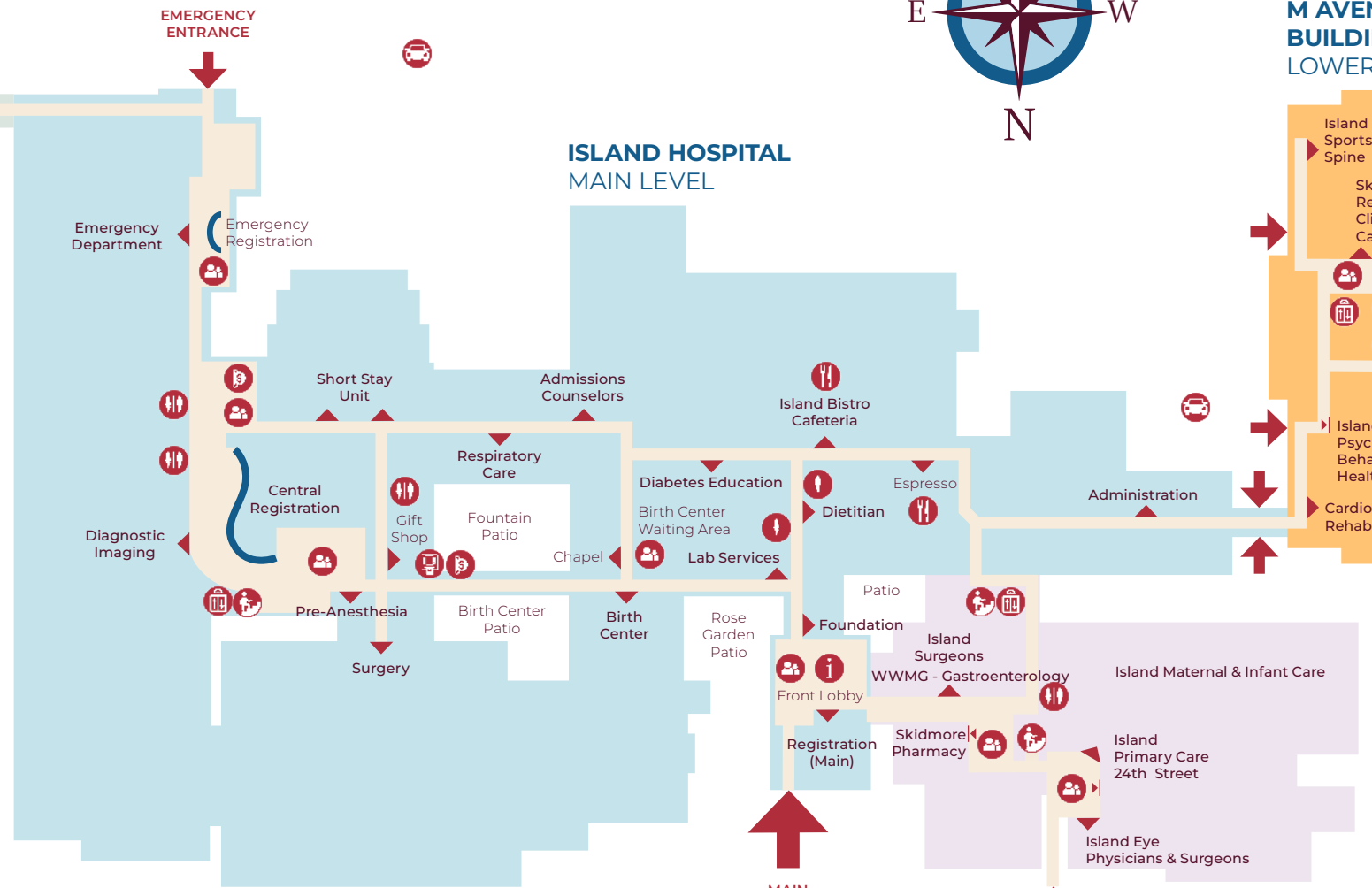
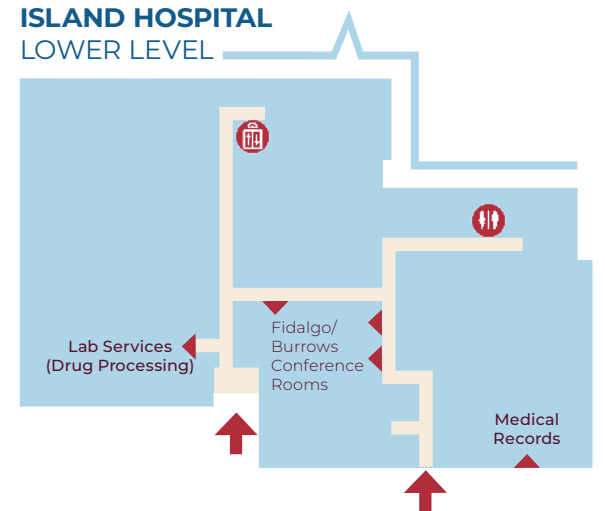
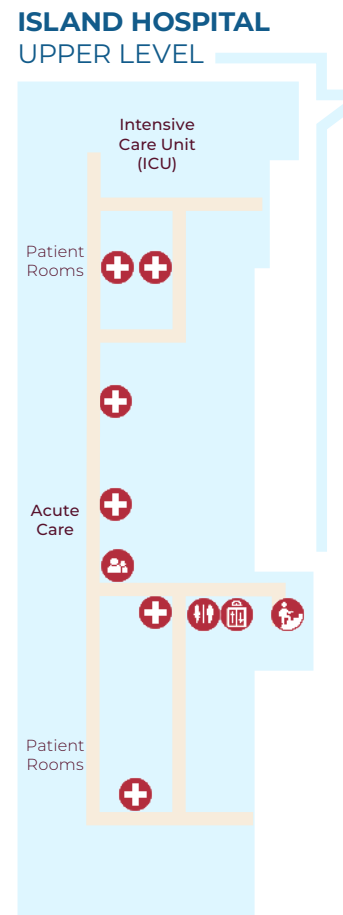
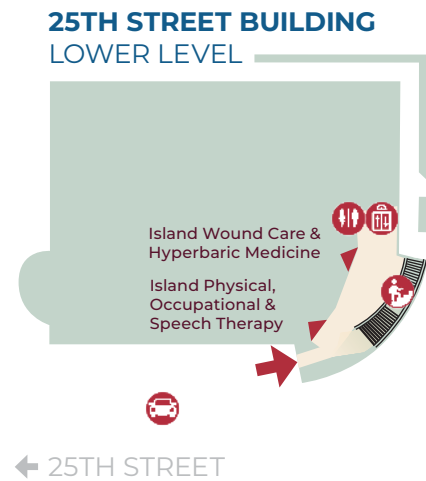
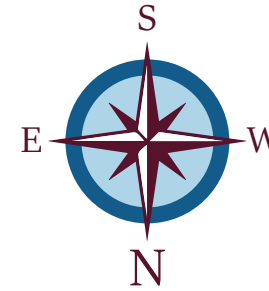


NAME CHANGE
Medical Arts Pavilion is now:
25TH STREET BUILDING

NAME CHANGES
Medical Office Building is now:
M AVENUE BUILDING
Anacortes Family Medicine is now:
ISLAND PRIMARY CARE
M AVENUE



Department	Building	Level
Acute Care	Hospital	Upper
Administration	Hospital	Main
Admission Counselors	Hospital	Main
Admitting (see Registration)		
Anacortes Family Med. (see Island Primary Care - M Ave)		
Billing Office (currently closed)	24th St Bldg	Lower
Birth Center	Hospital	Main
Cancer Care	25th Street	Upper
Cardiopulmonary Rehab	M Ave Bldg	Lower
Chapel	Hospital	Main
Conference Rooms:		
Fidalgo/Burrows	Hospital	Lower
Cypress, Guemes, Sinclair	24th St Bldg	Lower
Diagnostic Imaging	Hospital	Main
Diabetes Education	Hospital	Main
Emergency	Hospital	Main
Espresso	Hospital	Main
Fidalgo Medical Assoc. (see Island Primary Care - 24th St)		
Foundation	Hospital	Main
Front Lobby	Hospital	Main
Gift Shop (currently closed)	Hospital	Main
Human Resources	24th St Bldg	Lower
Intensive Care Unit (ICU)	Hospital	Upper
Island Eye Physicians & Surgeons	24th St Bldg	Main
Island Family Physicians	M Ave Bldg	Upper
Island Physical, Occupational & Speech Therapy	25th St Bldg	Lower
Island Primary Care - 24th St	24th St Bldg	Main
Island Primary Care - M Ave	M Ave Bldg	Upper
Island Psychiatry & Behavioral Health	M Ave Bldg	Lower
Island Sports & Spine	M Ave Bldg	Lower
Island Surgeons	24th St Bldg	Lower
Island Urology	25th St Bldg	Upper
Island Walk-In Clinic	M Ave Bldg	Upper
Island Wound Care & Hyperbaric Medicine	25th St Bldg	Lower
Labs:		
Blood Draw	Hospital	Main
Drug Processing	Hospital	Lower
Maternal & Infant Care	24th St Bldg	Main
Medical Records	Hospital	Lower
Patient Rooms (Acute Care/ICU)	Hospital	Upper
Pre-Anesthesia	Hospital	Main
Registration	Hospital	Main
Respiratory Care	Hospital	Main
Short Stay Unit	Hospital	Main
Skagit Regional Clinics - Cardiology	M Ave Bldg	Lower
Skidmore Pharmacy	24th St Bldg	Upper
Surgery	Hospital	Main
WWMG Gastroenterology	24th St Bldg	Upper

- ATM
- Elevator
- Information
- Food
- Nurses Station
- Parking
- Restroom
- Stairs
- Vending
- Waiting Area

NAME CHANGES
Island Medical Center is now:
24TH STREET BUILDING
Fidalgo Medical Associates is now:
ISLAND PRIMARY CARE
24TH STREET

← 24TH STREET →